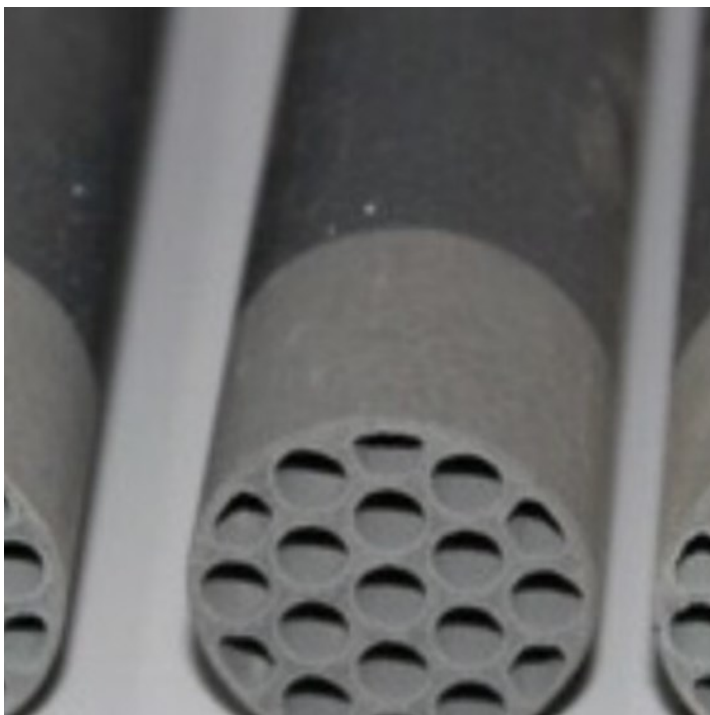


ROMEO

Process intensification for
catalytic-driven and eco-friendly
reaction systems



ROMEO

LiqTech joined Horizon2020 consortium as a partner with vast experience within the field of ceramic membranes. SiC material will be used in a new reactor concept to drastically reduce energy consumption.

The ROMEO project tackles process intensification for catalytic-driven and eco-friendly reaction systems.

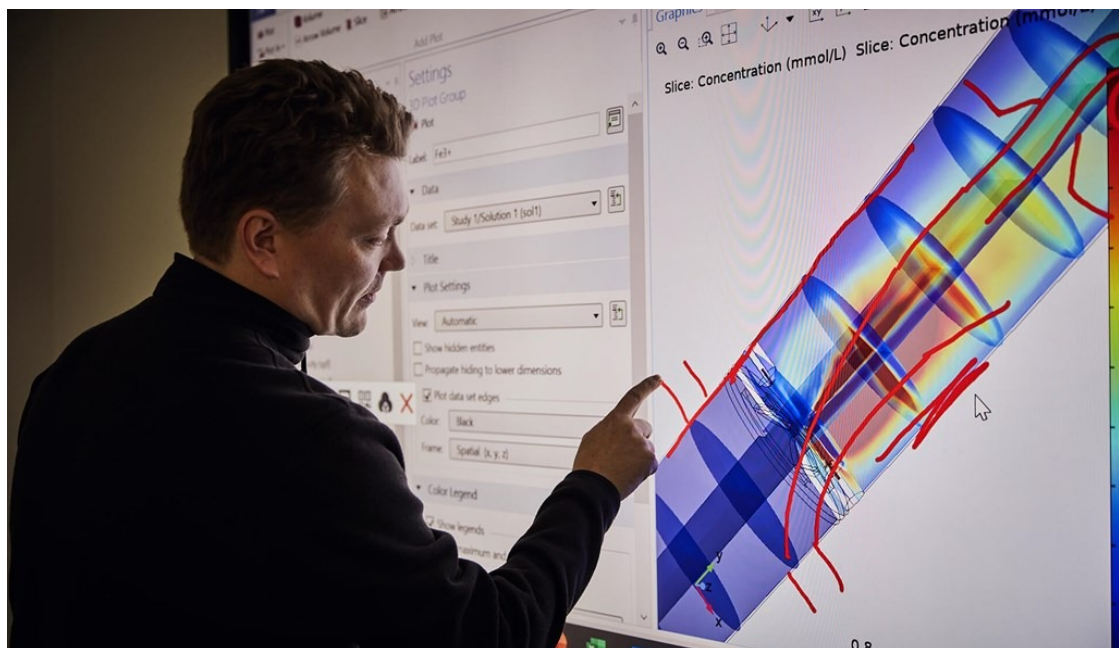
ROMEO stands for "Reactor Optimisation by Membrane Enhanced Operation". It is a Research and Innovation project, and has received funding from the European Union's Horizon 2020 research and innovation programme.

Learn more about the ROMEO project in this YouTube video.

ROMEO focuses on a new reactor concept to drastically reduce energy consumption. It will lead to the manufacturing of bulk chemicals at considerably lower operational and investment costs.

The aim of ROMEO is to reduce energy consumption by up to 80% and emissions by up to 90% in industrial catalytic gas-phase reactions.

ROMEO's 9 partners team up for 4 years to demonstrate the technical feasibility of this reactor concept. The project started in September 2015 with an EU budget of 6 million euros.



See more innovation projects

Go back to our innovation section and learn more about our interesting projects.

Maybe you would like to learn more about further development of the LiqTech SiC membrane? Or high performance hybrid twc/gpf automotive after treatment systems?